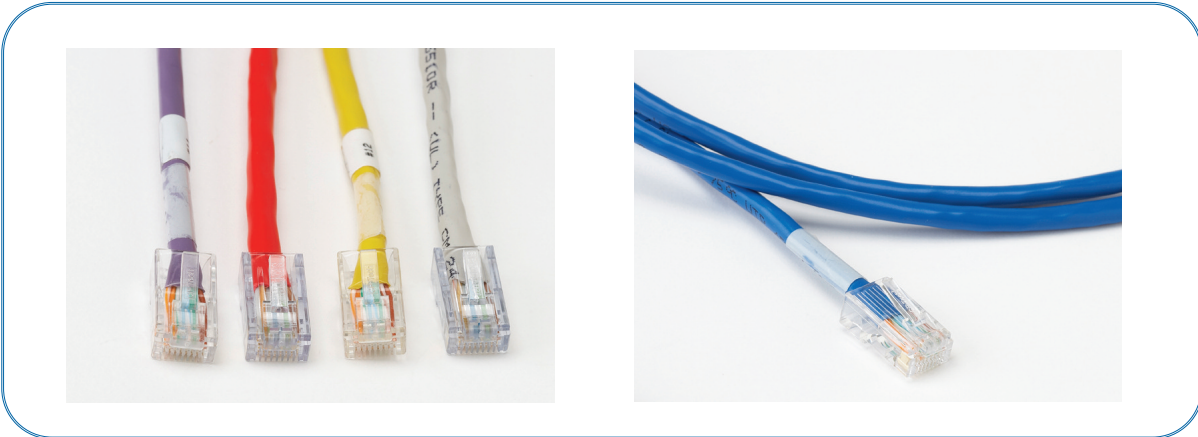


FieldSmart Copper Cables

CAT5e and CAT6 Patch Cords



Application

Category 5e and 6 copper patch cords connect a variety of equipment interfaces in both carrier and private networks, as well as customer premise environments.

Description

These patch cords provide physical mated connections between components in 10BASE-T, 100BASE-T, and 155Mbps ATM networks. Clearfield offers Category 5e and 6 copper patch cords with UTP cable and 8-conductor connectors manufactured to EIA/TIA standards.

Features & Benefits

- 100% tested for continuity and performance
- Meets or exceeds EIA/TIA 568B.2 CAT6
- 350Mhz/550Mhz
- ETL verified; UL listed; RoHS and WEEE compliant
- Latch guards with easy thumb depression
- Molded strain relief boots
- Nine stocked colors; custom configurations available
- Custom serialization/labeling

CAT5e and CAT6 Patch Cords

FieldSmart Copper Cables

CAT5e and CAT6 Patch Cords



Configured Part Numbers

CAT5e

C T 5 - **- N T** **- XXXM or XXXF ***

1 Select cable color

- 7 = Gray (PVC)
- 0 = Black (PVC)
- 1 = White (PVC)
- 4 = Red (PVC)
- 8 = Orange (PVC)
- 9 = Yellow (PVC)
- 5 = Green (PVC)
- 6 = Blue (PVC)
- 2 = Purple (PVC)
- A = Light gray (plenum)
- B = Dark gray (plenum)
- C = Black (plenum)
- D = White (plenum)
- E = Red (plenum)
- F = Yellow (plenum)
- G = Green (plenum)
- H = Blue (plenum)

2 **3** Select boot colors

- N = No boot
- 7 = Gray
- 0 = Black
- 1 = White
- 3 = Pink
- 4 = Red
- 8 = Orange
- 9 = Yellow
- 5 = Green
- 6 = Blue
- 2 = Purple

4 Select wiring configuration

- 1 = 568A
- 3 = Crossover

XXXM or XXXF

- XXXF = Length of pigtail in feet
- XXXM = Length of pigtail in meters

* Standard patchcords use stranded, non-shielded cable.

CAT6

C T 6 - **- N T** **- XXXF ***

1 Select cable color

- 7 = Gray (PVC)
- 0 = Black (PVC)
- 1 = White (PVC)
- 4 = Red (PVC)
- 8 = Orange (PVC)
- 9 = Yellow (PVC)
- 5 = Green (PVC)
- 6 = Blue (PVC)
- 2 = Purple (PVC)
- H = Light gray (plenum)
- A = Black (plenum)
- B = White (plenum)
- E = Red (plenum)
- K = Yellow (plenum)
- F = Green (plenum)
- G = Blue (plenum)

2 **3** Select boot colors

- N = No boot
- 7 = Gray
- 0 = Black
- 1 = White
- 3 = Pink
- 4 = Red
- 8 = Orange
- 9 = Yellow
- 5 = Green
- 6 = Blue
- 2 = Purple

4 Select wiring configuration

- 1 = 568A
- 3 = 568A Crossover
- B = 568A - Certified Cat 6
- D = 568A Crossover - Certified Cat 6

XXXXF

- XXXXF = Length of pigtail in feet

* Standard patchcords use stranded, non-shielded cable.