

# FieldSmart® Fiber Delivery Point (FDP)

## 144 Port PON in Pedestal Insert Kit or Direct Bury



### Application

The FieldSmart Fiber Delivery Point (FDP) 144 Port in PON Pedestal Insert Kit or Direct Bury provides splice or interconnect functionality in industry standard pedestals for drops to the home in the last mile of the access network. Additionally, it provides up to 144 homes served in PON environments.

### Description

The FieldSmart FDP 144 Port PON Pedestal Insert Kit or Direct Bury provides a cost-effective solution to service up to 144 homes within a Clearview® optimized design for PON applications. Accepting up to 13 Clearview Cassettes and five WaveSmart® High Density Splitters or WDMs, the PON Insert Kit scales to meet the network requirements when placing a larger PON cabinet is not desired or cost-effective. Providing the ultimate future-proof flexibility, the FDP Pedestal Insert can be deployed as a drop only pedestal, then easily converted to a distributed PON solution when required.

The FieldSmart Fiber Delivery Point (FDP) Pedestal Insert incorporates field-tested designs to provide a solution that is easily installed and modified. Whether your environment calls for splice only drops or demands the sophistication of a Clearview Cassette solution, a FieldSmart (FDP) Pedestal Insert can be configured to support any access point configuration. Compatible with a variety of RUS listed pedestals, the insert provides splicing and/or interconnect connectivity with slack-storage for drop cable scenarios or mid-span and ring-cut functionality for up to a 288 OSP fiber sheath.

### Features and Benefits

#### Integrity

- RUS listed
- Terminations are designed, tested and certified to Telcordia GR-326
- Clearfield® FiberDeep® Guarantee: 0.2 dB insertion loss or less, exceeding industry standards
- Inserted into RUS pedestals
- Fiber cable designed, tested and certified to Telcordia GR-20

#### Protection

- RUS listed industry standard pedestals
- Clearview Cassette for physical fiber protection, bend-radius protection, access
- Buffer tube slack storage fully bend-radius protected
- Both metallic and non-metallic pedestals
- Can wrench accessible designs

#### Access

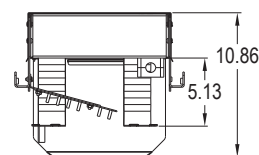
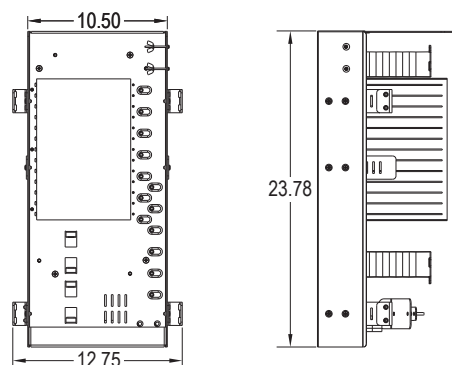
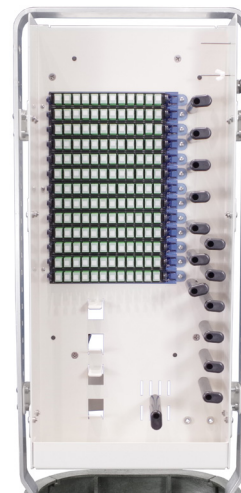
- Lift off dome covers are non-metallic
- Clearview Cassette for quick access to terminations
- Cupboard style front and rear access-Metallic
- Fits into select Channell or Pencell pedestals

#### Investment

- Low cost entry with RUS listed pedestals
- Scalable with Clearview Multiplied design for cost alignment to subscriber revenue
- Future proof with drop only to PON distributed migration
- Patch only or patch and splice configurations supported
- Flexible integration into a variety of RUS listed pedestals with simple bracket kits

### Accessories

- WaveSmart High Density Splitter



# FieldSmart® Fiber Delivery Point (FDP)

## 144 Port PON in Pedestal Insert Kit or Direct Bury



### Technical Specifications

FieldSmart Fiber Deliver Point 144 Port PON in Pedestal Insert Kit or Direct Bury	
Dimensions ( <i>for insert only</i> )	23.78" H x 12.75" W x 10.86 D (604.01 mm x 328.85 mm x 275.84 mm)
Port Density	144
Feeder/Express Ports	12
Cassette Types Supported	Clearview® Blue - Left Exit
Connector Types	SC/UPC, SC/APC, LC/UPC, LC/APC
Cable Types	Indoor/Outdoor, Outdoor (Riser/Non-Rated), Outdoor Armored (Riser/Non-Rated)
Splice Capacity	12 splices in each Clearview Cassette
Storage Capacity	Up to 5 - with High Density Splitter (KE series)
Material	14 gauge cold rolled steel with almond powder coating

### Configured Part Numbers

J - - - - - A Z Z - B XXXXM or XXXXF

1 2 3 4 5 6

#### 1 Select Pedestal Type

##### Insert with Pedestal

3 = PON, Patch and splice insert with non-metallic direct bury Pencil Pedestal

4 = PON, Patch only insert with non-metallic direct bury Pencil Pedestal

##### Inserts Only

V = PON, Patch and splice insert only for Pencil Pedestal – no pedestal included

Y = PON, Patch only insert only for Pencil Pedestal – no pedestal included

B = PON, Patch and splice insert only for Channell Pedestal – no pedestal included

N = PON, Patch only insert only for Channell Pedestal – no pedestal included

#### 2 Select Feeder Port Count

A = No feeders

B = 12 ports (1 cassette)

Z = N/A

#### 3 Select Distribution Port Count

X X X = port count in increments of 12

Z Z Z = N/A

#### 4 Select Connector Style

A = SC/UPC

C = SC/APC

Z = N/A

F = LC/UPC

H = LC/APC

#### 5 Select Mode / Type

1 = Singlemode - non-ribbon

2 = Singlemode - ribbon

#### 6 Select Cable Construction

B = OSP Riser

E = OSP Non-Rated

F = Patch and splice

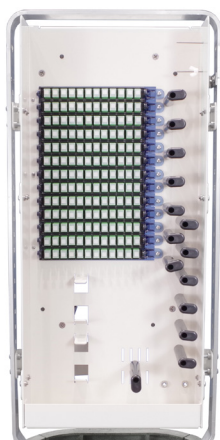
M = Armored OSP Non-Rated

Z = N/A

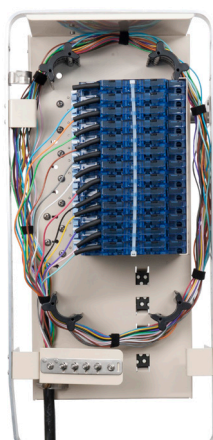
#### XXXXM or XXXXF

XXXXM = Length of Pigtail in Meter

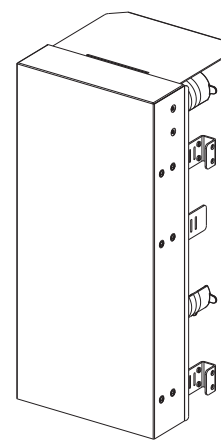
XXXXF = Length of Pigtail in Feet



144 PON Insert - Front



144 PON Insert - Back



144 PON Insert with Cover