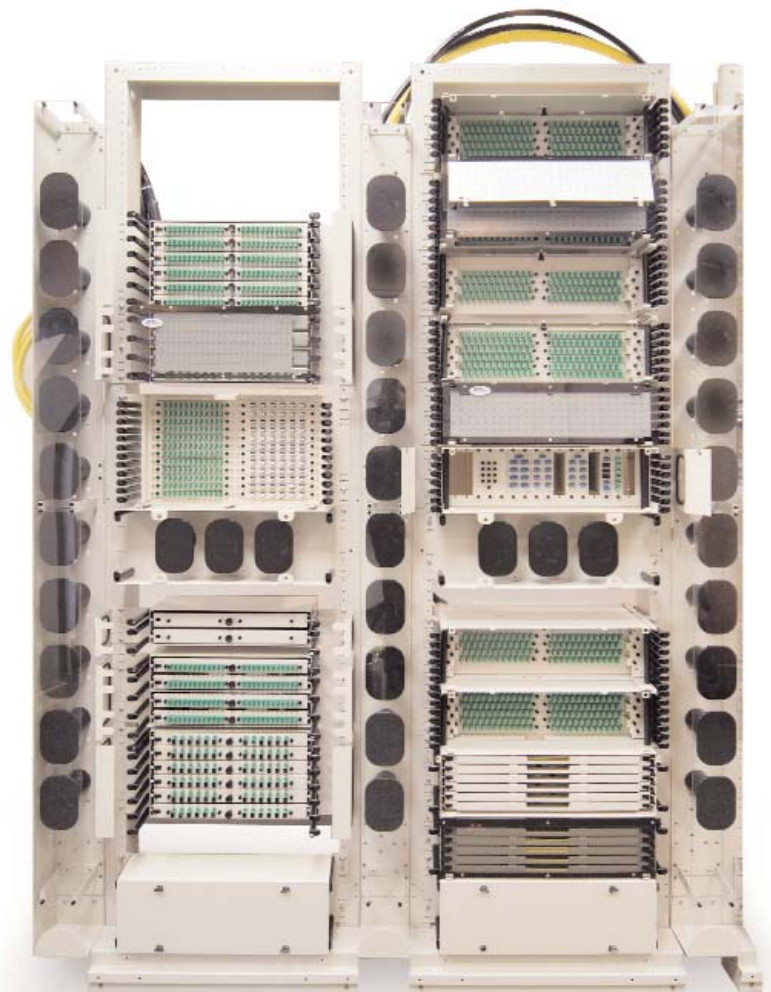


Fiber Distribution System

APACN's Fiber Distribution Systems (FDS) are high density, easy access fiber distribution frames and panels. The FDS is intelligently designed to provide superior cable management including easy fiber access, reduced installation times, guaranteed bend radius protection and improved traceability. The product-line fully supports a wide range of panel configurations, densities, connectors, and adapter options and is offered alongside a wide range of optical components that can be utilized on a stand-alone basis or integrated into the frame system. The FDS is ideally suited for high-density broadband and enterprise connectivity applications from the Central Office to the Last Mile.



F23 Fiber Distribution System

| Panel Type | Max Frame Capacity |
|------------|--------------------|
| 72 port | 864 |
| 96 port | 1152 |
| 144 port | 1728 |



F23 144-port

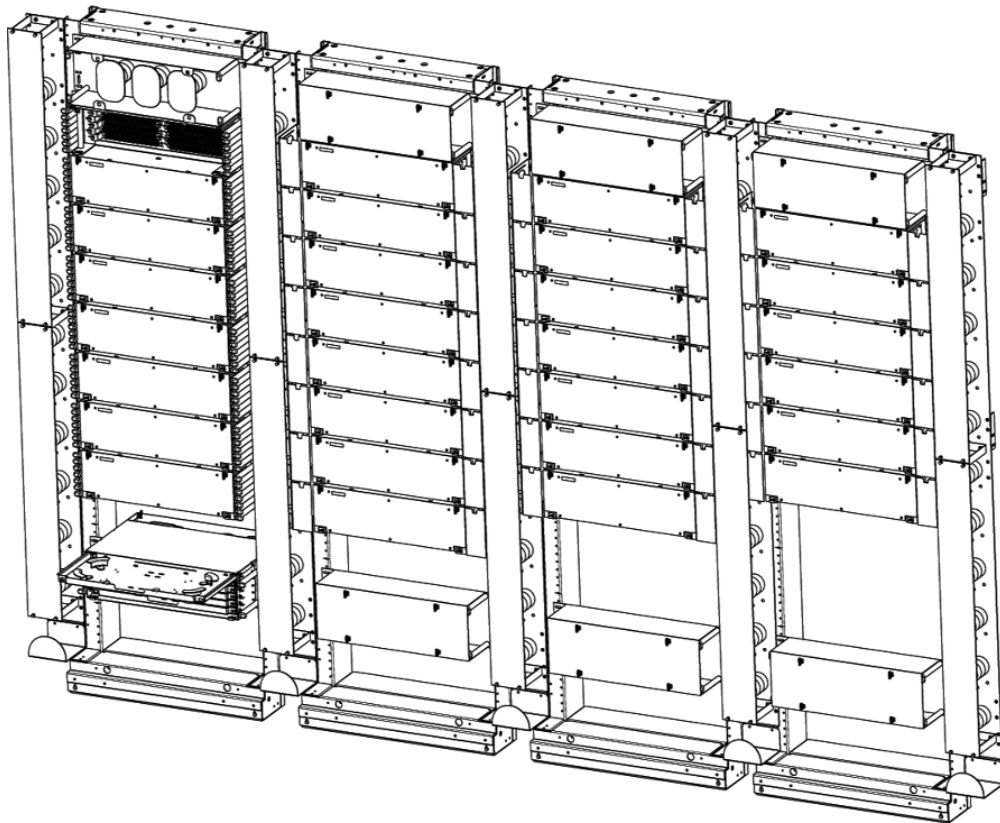
F19 Fiber Distribution System

| Panel Type | Max Frame Capacity |
|-------------------|--------------------|
| Standard Density | 504 |
| High Density | 600 |
| Very High Density | 1152 |



F19 VHD 192-port

- Intelligently designed to provide superior cable management including easy fiber access, reduced installation time, guaranteed bend radius protection and improved traceability
 - Supports a wide range of panel configurations, densities, connectors and adapter options and is offered alongside a wide range of optical components and fiber assemblies
 - High-density design facilitates more revenue-generating circuits in the Central Office than many competing products
 - Industry standard footprint that is smaller than many competing products -
- Flexibility in Central Office Growth**
- Pre-loaded with factory terminated assemblies to save time and expense
 - Open accessible design and non-angled connectors enable faster fiber jumper routing and reduce the risk of fiber damage when cleaning and patching fibers
 - Hinged / removable front panel cover enables easy access to jumpers and facilitates system documentation
 - Interbay management panels enhance fiber jumper routing and excess cable storage capacity
 - Versatile frame design is capable of integrating IFC or OSP cable providing full support for multiple fiber types
 - Ideally suited for high-density broadband and enterprise connectivity applications



www.apacn.com